



No Raw Edge Pillowcase Tutorial

Supplies

3/4 yard, 45" wide cotton fabric
9 inches of 45" wide cotton fabric
3 inches of 45" wide cotton fabric
Basic sewing supplies
sewing machine



No Raw Edge Pillowcase

Supplies:

3/4 Yard 45" main fabric for a standard pillowcase
or 1 yard for a King pillowcase

9" of 45" border fabric

3" of 45" accent fabric

1. Cut your main fabric 27" by the width of the fabric, or 36" for a king pillowcase. Cut off the selvages of the fabrics.



2. Lay your border fabric right side up. Fold the accent fabric in half, wrong sides together along the long side. Lay this on top of the border fabric aligning the top raw edges



3. Next lay your main fabric on top of the stack, aligning all the raw edges



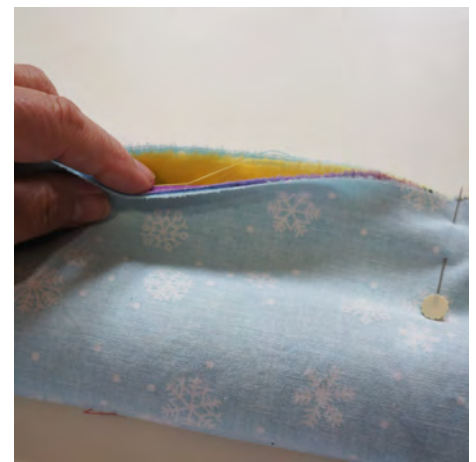
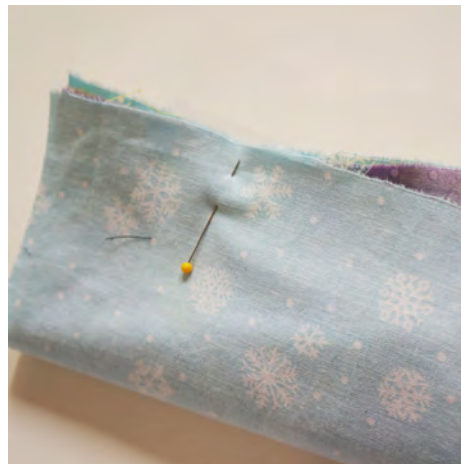
4. Pin all the layers together



5. Roll up your main fabric so that it is entirely inside of the border fabric and you can see the bottom edge of the border fabric.



6. Bring up the bottom edge of the border fabric and repin so that all the raw edges are together. If you can't get the border piece around the main fabric, go back and roll the main fabric up tighter. The pins help to keep the main fabric out of the way when we sew the seam. All the raw edges should be pinned together.



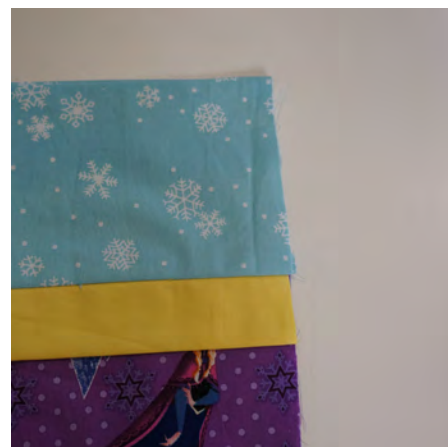
7. Now sew all the raw edges together at the top using a 3/8" seam allowance. Don't worry if everything doesn't line up at the end, we will trim it later.



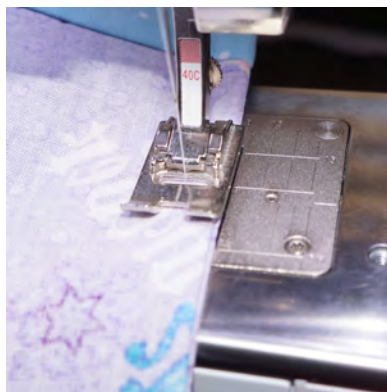
8. Once this is sewn, reach inside and pull out the main fabric.. This will take a little pulling, but it will all come out.



9. Now you can trim up any uneven edges



10. To finish the pillowcase, we will use a French Seam. Sew the side and bottom edges, WRONG sides together using a 1/4" seam allowance. Trim this to 1/8." Turn the pillow case wrong side out and stitch the seams again using a 1/4" seam allowance, which will totally encase the raw edges.



10 Steps and you are Finished!
I hope you enjoyed this Tutorial.